



# Short Breaks Statement 2024

For families and professionals who support and care for a child or young person up to the age of 18, who has a disability and lives in the borough of Telford and Wrekin. This Short Break Statement is designed to show how we meet the social care needs of Children and Young People with disabilities in Telford and Wrekin. It shows the levels of support available, who it is available to and how to access it.

**Local Offer**  
for Special Educational Needs and Disability

Discover everything you need to know about education, health and care services in your local area for children and young people with SEND 0-25yrs at

[www.telfordsend.org.uk](http://www.telfordsend.org.uk)



# Welcome to our Short Breaks Statement

In Telford & Wrekin we work together with children, young people and their families to achieve the best possible outcomes in all areas of their life. We believe that with the 'right support at the right time' this is possible. Working together, children and young people with disabilities can and will achieve their full potential.

This Short Break Statement is designed to show how we meet the social care needs of Children and Young People with disabilities in Telford and Wrekin. It shows the levels of support available, who it is available to and how to access it.

It explains:

- What Short Breaks are for children and young people with disabilities
- Who can have a Short Break
- What sort of breaks are available
- How to access a Short Break

The statement is part of our SEND Local Offer. The SEND Local Offer describes the support available for families in the borough of Telford and Wrekin, who have a child with special educational needs and/or a disability. [www.telfordsend.org.uk](http://www.telfordsend.org.uk)

## Short Breaks Regulations

The regulations place a duty for all local authorities to produce a statement, to explain what 'Short Breaks services' are available to children with disabilities and their families, and how they could access them. The council has to publish the statement online and review it regularly to ensure that information is up to date.

In summary, local authorities must provide a range of Short Breaks services that are:

- Flexible, reliable and regular to meet changing family need
- Reach groups of parents who may be more difficult to engage
- Build on universal services
- Promote greater levels of confidence and competence for adult life
- Include: day-time care, overnight care, respite
- Promote participation in activities
- Culturally and age appropriate



[Click here to view the Short Breaks Regulations 2011 guidance document.](#)

# What are Short Breaks?

Short Breaks are solely available for children and young people with a disability and span a range of activities, care and support options that a child/ young person with disabilities may need. A Short Break can last from a few hours to a few days, an evening, overnight, a weekend, and school holiday daytime activities, depending on assessed need.

Short Breaks provide an opportunity for children and young people with disabilities to spend time away from their carers, try out new things, have fun and make new friends. Short Breaks can also provide families with a chance to do things together.

# What is Disability?

Telford & Wrekin Council use the legal definition of disability;

***A physical and/or mental impairment that has a long term and adverse effect resulting in significant impact on daily living/development of the child/young adult***

It includes children who have moderate to severe and profound disabilities. It also includes children who have complex health needs and who may have a palliative or life-limiting condition.

The Children's Act 1989 requires all local authorities to establish a register of children with a disability in their area. This is then used for statistical information and to assist service planning to meet the needs of children with disabilities and their families.

Having a disability or being on the children's disability register does not automatically mean that you or your child need to access social care support, you may instead be signposted to access 'universal services' or targeted and preventative support. This statement is intended to show you what support may be best for you based on your child's needs.

If you would like your child to join the register, email [shortbreaks@telford.gov.uk](mailto:shortbreaks@telford.gov.uk) to request an application form.

## **The Legal Framework used in this statement:**

Breaks for Carers of Disabled Children Regulations 2011

Children Act 1989 (Section 17 (1))

Children and Young Persons Act 2008

Children and Families Act 2014

Chronically Sick and Disabled Persons Act 1970

Equality Act 2010

NHS Act 2006 (Amended 2012)

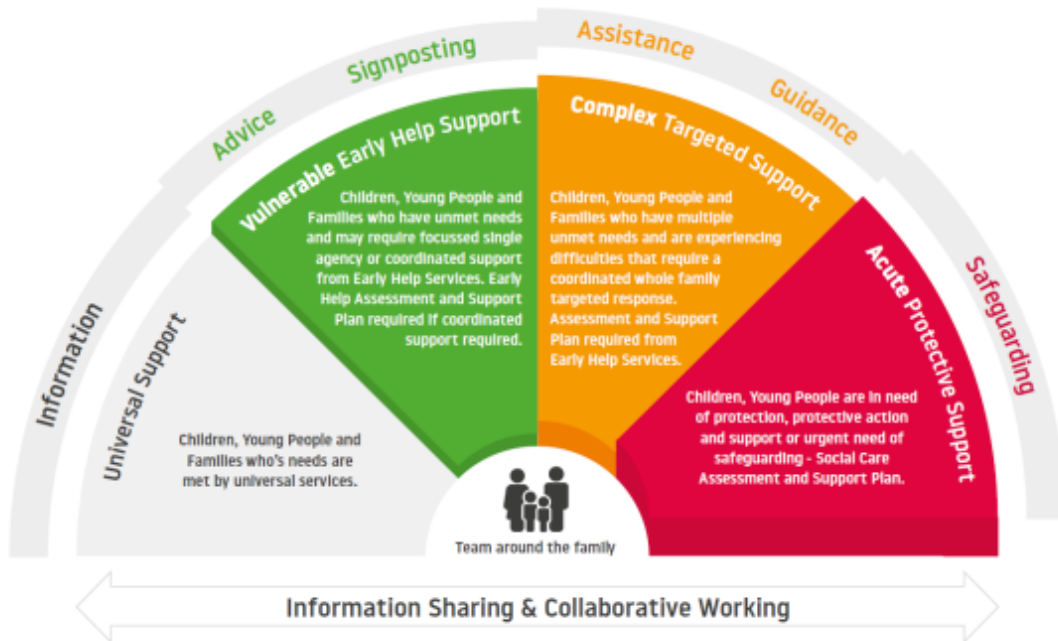
Care Act 2014

Short Breaks Regulations

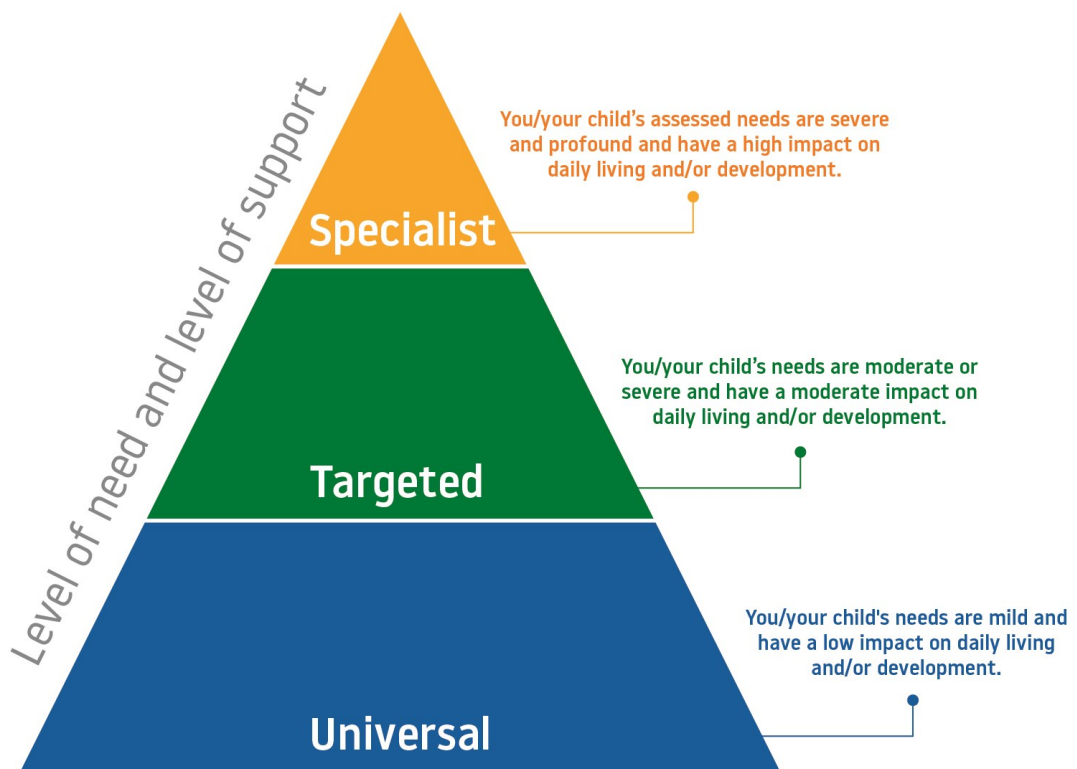
# A Tiered Offer of Support

Not all children with disabilities and their families need the same level of support. There are three levels of Short Breaks offers in Telford and Wrekin, matched to the impact of your child's disability on day-to-day life, your child's needs, and each family's individual circumstances. An individual's needs may fluctuate between levels.

The following 'windscreen of need' is used to shape the Council's Children's Services support offer.



The Short Breaks offer is illustrated in the diagram below.





# Universal and Universal Plus Support

Universal level support is open for everyone to use i.e. leisure centres, cinemas, Scouts and Guides, and should be available to all people. Universal plus is where reasonable adjustments have been made to meet additional needs particularly where disability has a lesser impact on day-to-day life.

## Needs:

- The child or young person's family feels supported
- The child or young person needs support to build relationships and social skills with others in their community
- The young person needs support to prepare for adulthood

## Service Examples:

- Information, advice, guidance
- Community Resources
- Schools
- GPs, Health Visitors, school nurses
- Youth Centres/Clubs
- Citizens Advice



Below is a list of some of the local activities and services that are either accessible, or designed for children and young people with disabilities in Telford and Wrekin. These are listed in more detail on the SEND Activities & Events Local Offer page [www.telfordsend.org.uk/activities](http://www.telfordsend.org.uk/activities)

### Cricket Federation for People with Disabilities

[www.cfpd.org.uk](http://www.cfpd.org.uk)

### Silhouette Dance

[www.silhouettedanceschool.com](http://www.silhouettedanceschool.com)

### Shining Stars 0-5 Group

[shiningstars2017@hotmail.com](mailto:shiningstars2017@hotmail.com)



### Funky Friday Inclusive Disco

[www.facebook.com/funkyfridayinclusivedisco](http://www.facebook.com/funkyfridayinclusivedisco)



[www.brightstarboxing.co.uk/](http://www.brightstarboxing.co.uk/)



### 4All Foundation Dodgeball and Boxing

[www.4all.foundation](http://www.4all.foundation)

## Shropshire Climbing Centre

[www.newport-rock.uk.business.site](http://www.newport-rock.uk.business.site)

## Telford Powerchair Football Club

[www.telfordpfc.wixsite.com/telford-pfc](http://www.telfordpfc.wixsite.com/telford-pfc)

## Telford Chin Woo

[www.telfordchinwoo.co.uk](http://www.telfordchinwoo.co.uk)



## Newport Hub

[www.telfordchinwoo.co.uk](http://www.telfordchinwoo.co.uk)



## Accessible Play Ground

Telford Town Park—[www.telfordtownpark.co.uk](http://www.telfordtownpark.co.uk)

## Autonomy Football Club

Search 'Autonomy Evolution FC' on Facebook



[www.parkwrekingymnastics.com](http://www.parkwrekingymnastics.com)

## Telford Inclusive Libraries

[www.telford.gov.uk/info/1012/libraries](http://www.telford.gov.uk/info/1012/libraries)

## Shropshire Rugby Rebels

[www.facebook.com/shropshirerugbyrebels](http://www.facebook.com/shropshirerugbyrebels)

## Cavalier Centre

[www.cavaliercentre.org](http://www.cavaliercentre.org)



# KOMBATKIDS

[www.kombatkids.com](http://www.kombatkids.com)

## Telford Sailability

[www.telfordsailability.co.uk](http://www.telfordsailability.co.uk)



## Dancerella

[www.facebook.com/dancerella.uk](http://www.facebook.com/dancerella.uk)

## Youth Clubs

Challenging Perceptions—01952 683700

Children's Autism Hub—01952 260062

Club 2000—Club 2000 on Facebook



[www.boardroomgamingcafe.co.uk](http://www.boardroomgamingcafe.co.uk)



[www.hartbeeps.com](http://www.hartbeeps.com)

## Sensory Rooms

Jungleland—[www.junglelandtelford.com](http://www.junglelandtelford.com)

The Glow Co—[www.theglowcosensory.com](http://www.theglowcosensory.com)

Big Street—[www.bigstreetlittlefeet.co.uk](http://www.bigstreetlittlefeet.co.uk)

PODS—[www.podstelford.org](http://www.podstelford.org)

Challenging Perceptions—01952 683700

## Hoo Zoo and Dinosaur World

[www.hoo-zoo.com](http://www.hoo-zoo.com)

## Tiny Town Newport

[www.tinytownnewport.co.uk](http://www.tinytownnewport.co.uk)



# Inclusive Leisure

Telford and Wrekin's Leisure Services offer a wide range of activities across the Borough that are inclusive to all children and families. There are SEND specific sessions, as well as inclusive to all sessions. Activities on offer include:

**Golf** There is an accessible driving range and putting green at Lawley and Horsehay Village Golf Club and Fitness Centre.

**Gym** At all Aspiration gyms, there is adaptable resistance equipment, wheelchair accessible machines and rig and free weight area.  
**Stirchley Adapted Gym** Stirchley Gym is fully adapted.

**Ice Skating** All public skating sessions are inclusive to all, and there are SEND sessions held on a weekly basis.

**Skiing** SEND skiing and tubing sessions are held on a weekly basis. You can contact [yps@telford.gov.uk](mailto:yps@telford.gov.uk) to find out more.

**Soft Play** Telford Ice Rink hold Soft Play for both juniors and seniors on a weekly basis.

**Swimming** Leisure Centres hold a range of SEND swimming, family swimming and junior SEND swimming sessions throughout the week.

If you would like to find out more about the facilities within the Leisure sites, or the timetable of SEND sessions, visit [www.telfordandwrekinleisure.co.uk](http://www.telfordandwrekinleisure.co.uk)

You can also watch videos of two of our residents accessing Leisure Services, and how the activities have 'saved their lives' on the webpage linked above.



# Targeted Support

Targeted Level Support is for children and young people where disability has a moderate impact on day-to-day life, such as:

## Needs:

- The child or young person and their family is isolated
- Caring for the child or young person has a moderate impact on the health (including mental health) of their parent/carer and/or the family unit
- The child or young person needs a moderate level of supervision and care to ensure their safety and wellbeing
- The young person needs additional support to prepare for independence in adulthood.

## Service Examples:

- Telford Childrens Autism Hub
- SEND Local Offer
- Occupational Therapy
- Early Help Offer
- Aids and Adaptation
- PODS parent carer forum
- Independent Living Centre
- SEND Information, Advice and Support Services (SENDIAS)



## Parents Opening Doors (PODS) Parent Carer Forum

PODS is a parent carer/peer led charity with staff and volunteers who have the relevant 'real life' experience to support families who have a child with a disability or additional need (0–25 years). PODS provide support in a number of ways, including:

- Hold family groups and activities across Telford and Wrekin
- Provide emotional and practical support to families
- Work in partnership with Telford and Wrekin Council, Health, Social Care, Education, Voluntary and Community Services.
- Hold social and fundraising events for PODS families
- Provide relevant information via information events, family groups, e-bulletins, website and other social media, such as Facebook and Twitter

You can find out more about PODS and how to become a member by visiting [www.podstelford.org](http://www.podstelford.org)



## Special Educational Needs and Disabilities Information, Advice and Support

SENDIASS can help you in a number of ways, including:

- Listen to your concerns and provide information and advice on the 'phone or in person
- Work with you to explore your options
- Help you prepare for meetings
- Help to explain reports written by professionals
- Give you information in relation to SEND law to enable you to participate and make informed decisions regarding your child's education
- Signpost you to other sources of information and support
- Work in partnership with schools and the local authority to develop positive relationships and outcomes



You can find out more by visiting [www.telfordsendiass.org.uk](http://www.telfordsendiass.org.uk) or calling 01952 457176.

---

## Telford Children's Autism Hub

Whether your child has just received a diagnosis or you are looking for information to help your child flourish, the team are there to offer you guidance and support. The Children's Autism Hub is open to all children and young people and their families, who have a diagnosis of Autism and are a



As well as providing advice and support, the Children's Autism Hub hold activities and support groups for children and parents.

You can find out more by visiting [www.telfordautismhub.org.uk](http://www.telfordautismhub.org.uk) or calling 01952 916109.

---

## Independent Living Centre

The ILC was commissioned to offer support to individuals to enable them and their families to live well and safe in their community. You can go along to receive help to and assess your needs to enable informed decisions and enhanced life choices. A purpose built environment provides a 'show home' with built in features to both physically and digitally promote independent living and use of modern technology and Assistive Equipment solutions.

You can find out more or view a virtual tour of the ILC by visiting [www.telfordandwrekin cvs.org.uk/independent-living-centre](http://www.telfordandwrekin cvs.org.uk/independent-living-centre) or calling 01952 916109.

# Early Help

Early Help is about identifying needs within families early, and proactively offering preventative support before the problems become more complex. Those coming into contact with families e.g. teachers, the Healthy Child Programme (health visitors and school nurses), childcare practitioners, the police, volunteers etc. all have a responsibility towards identifying emerging needs as early as possible.

Support can be offered early in life or early after the emergence of a particular need which can arise at any point throughout childhood and adolescence. Early Help support is available for families and with children and young people aged 0-18 and up to 25 if they have a special educational need or disability.

You can find out more about the service or details of the weekly drop-ins at:

[www.telfordfamilyhub.co.uk](http://www.telfordfamilyhub.co.uk)



The poster features the Telford & Wrekin Cooperative Council logo and the slogan 'Protect, care and invest to create a better borough' at the top. The Telford and Wrekin FAMILY HUBS logo is also present. The main title 'SOUTHWATER DROP IN' is in large, bold letters. Below the title is an illustration of a park with a bridge, a hot air balloon, and people. The text 'Every Wednesday 9.30am - 12:30pm Southwater Library - children's section' is displayed. A list of services includes: Advice and signposting, Information on parenting/courses, Support and guidance around accessing local community activities, and Family hubs information. At the bottom, it says 'Provided by Strengthening Families and Dandelion Peer Parent support' next to a dandelion icon. A photo of a smiling family is on the right side of the poster.

# Disability Related Benefits

Below is a list of local and national organisations that can provide help and advice regarding accessing disability related benefits:

## Citizens Advice

[www.citizensadvice.telfordandthewrekin.org.uk](http://www.citizensadvice.telfordandthewrekin.org.uk)

0300 330 1165

## Department of Work and Pensions

[www.dwp.gov.uk](http://www.dwp.gov.uk)

0800 88 22 00

## Contact

[www.contact.org.uk](http://www.contact.org.uk)

0808 808 3555



## What is iCan2?

iCan2 provides targeted and preventative level support for children and young people where disability has a moderate or severe impact on day-to-day life. iCan2 activities are commissioned by the local authority for children with moderate, severe, and profound disabilities who are unable to access universal/universal plus services.

## What can iCan2 members access?

- **Youth clubs** – opportunities for children and young people to socialise in a safe environment with support and supervision.
- **Sports and Leisure** – include, but are not limited to, sensory activities, basketball, football, team games, swimming, skiing, and tubing.
- **Creative Arts** – include, but are not limited to, music, dance and acting.
- **Activity Passes** – Passes currently cover entry to Tenpin Bowling, Shugborough Estate, Attingham Park, Hoo Zoo and Dinosaur World, Monkey Forest at Trentham and Ironbridge Museums. Bookings can be made by emailing [shortbreaks@telford.gov.uk](mailto:shortbreaks@telford.gov.uk) including the child's name, the pass and the date of the booking.

## What is the eligibility criteria?

In order to be eligible to access iCan2, children and young people must:

- Meet the criteria of the 'Targeted and Preventative Level Support' within this document
- Be aged 17 or under
- Be a resident within Telford and Wrekin

## How can I apply to become an iCan2 member?

To apply to be an iCan2 member, an application form can be requested by emailing [shortbreaks@telford.gov.uk](mailto:shortbreaks@telford.gov.uk) or your allocated worker. The iCan2 membership application must be completed and if accepted as eligible, your child will be entered onto the membership list in order to take part in any targeted activities or access the activity passes.

## How can I book an activity pass?

If you would like to book a pass for you and your child, or your child and their PA, please email [shortbreaks@telford.gov.uk](mailto:shortbreaks@telford.gov.uk) with your child's name, the pass and the date that you would like to book. We will confirm your booking and instructions via email.



The activity passes have been a really positive step in ensuring that iCan2 members have access to activities which they may otherwise not be able to. It ensures that iCan2 members are offered an equal level of engagement suitable for their needs. As a business, the passes have ensured that all of our children are equally serviced irrespective of financial status or disability.

Thank you for accessing the Monkey Forest day passes for our family. Our children have a range of additional needs and this attraction was enjoyable for all 3 of them. It was lovely to be out in nature, a great family day out that I would highly recommend. We really appreciated that we were able to access these passes and it is a great resource to other families living with disabilities.



# Specialist Support

The Children with Disabilities Service provides specialist level support for children and young people with severe or profound, complex disability and health needs up to the age of 18 years. The service includes a range of professionals, they are:

- Social Workers;
- Social Work Assistants;
- Short-Break Co-ordinator;
- Direct Payment Officer
- Occupational Therapy Team

The Children with Disabilities Team work with children and young people where their assessed needs are severe or profound and their disability is significantly impacting on their ability to have opportunities to be safe, develop skills for life and be part of their local community growing up. The specialist support and services are provided for children and young people whose assessed needs cannot be met through universal, targeted or preventative services.

The Occupational Therapy Team provide support with specialist equipment, aids and adaptations to support/improve everyday tasks.

The social workers within the team adhere to the same statutory requirements as other local authority social work teams, as well as further specific criteria for the Children with Disabilities Team. Appropriate referrals to the team include:

- Children with Cerebral Palsy, Muscular Dystrophy and other physical disabilities that significantly impact on the child's wellbeing;
- Children and young people diagnosed with severe learning disabilities;
- Children and young people with a diagnosis of Autism with associated learning disability which has a significant impact on their communication needs, social and behavioural development;
- Children and young people with severe, profound or multiple disabilities;
- Children and young people with severe global development delay;
- Children and young people with severe sensory impairment; and
- Children and young people with complex physical disability and severe or profound health needs.

The Children with Disabilities Team do not support children whose primary needs centre around emotional/behavioural development and/ or mental health, for example some children with Asperger's syndrome, mild or moderate autism or attachment disorder.



A Child and Family Assessment will be completed by a social worker to determine unmet needs, the impact of the disability on the child and their family and caring responsibilities of parent/ carers. The Assessment will holistically review the needs of the child and family while incorporating individual additional needs as a child with disabilities.

Eligible families will be allocated a social work assistant to work alongside the social worker and family to develop a needs led, outcome based plan of support. The plan can be a combination of support provided in addition to support provided by social care.

Children and young people under Specialist Services are categorised as a Child in Need, Section 17, Children Act 1989 and will be reviewed through a Child in Need Plan to ensure clear identified outcomes are achieved. The Plan will include Specific, Measurable, Achievable, Relevant and Time-Bound needs led outcomes. The plan is reviewed through a multi-agency Child in Need meeting to ensure identified needs are being met and outcomes are being progressed in a timely way. The frequency of meetings and visits will be determined by the level of need, which is reviewed jointly by the allocated worker and Team Manager.

## Planning and Reviewing Short Breaks

We use a range of information to plan Short Breaks services to meet the need of local families. We do this by:

- Working together as a Short Breaks forum that includes the PODs parent carer forum, parent carers and young people
- Using surveys, feedback and data to ensure we understand local need and lived experience

This Short Breaks statement will be reviewed regularly in consultation with local families, providers and professionals.

## Get in touch with us



We hope you find this statement and the information it contains useful to you. If you have any queries about Short Breaks then please email us at [shortbreaks@telford.gov.uk](mailto:shortbreaks@telford.gov.uk)