



Telford & Wrekin
Co-operative Council

Protect, care and invest
to create a better borough



SENCo Network Meeting

03 October 2024

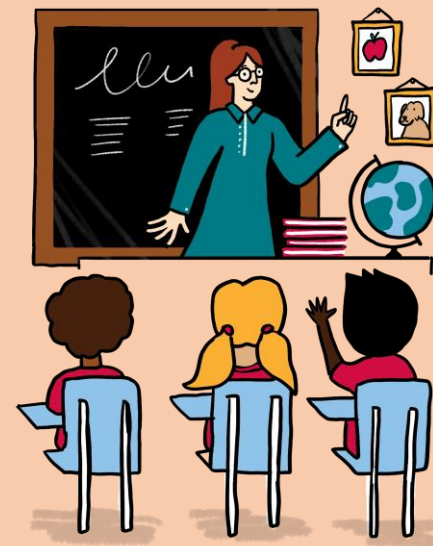
Laura Goodfellow

Interim Service Delivery Manager

SEND & Personalisation

On the Agenda:

- Telford and Wrekin Updates
- Synergy and SAM
- Who's who
- ISF and Outreach updates
- Networking
- EP Service & Support
- Phase Transition and Annual Review Top Tips
- Change programme



Data Overview – National Data

Headline facts and figures @ June 2024

New EHCNA Requests

The number of initial requests for an EHC plan made to local authorities during the 2023 calendar year.

National increase of 20.8%

Telford and Wrekin increase of 59%

No of EHC Plans

The number of EHC plans at January 2024.

National increase of 11.4%

Telford and Wrekin increase of 13.4%

Timeliness - Rate of EHC plans issued within 20 weeks

The percentage of new EHC plans (excluding exclusions) issued within 20 weeks.

Nationally 50.3%

Telford and Wrekin 94%

Focus on Support

- Increased support to manage complexity of needs in mainstream provision through Support Services.
- Launch of ISF Secondary this term to give Secondaries opportunity for peer to peer advice.
- Develop more opportunities between Specialist at Mainstream through an increased Outreach Offer.
- Special School Sufficiency working group – planning for the future
- Specialist Hub / Resource Base
- SEND Officer Drop in for each locality in Autumn Terms.

Synergy and the SAM Portal



As of **Thursday 5 September**, the SAM Portal will be the only mechanism for submitting the following forms:

- AST Referrals
- Child Not Receiving Education Referrals
- Educational Psychology Service Consent
- Fair Access Panel Referrals
- LSAT Consent and Background Information
- Modified Timetable Notifications
- Permanent Exclusion Notification
- Pre-Suspension Hotline Request for Service
- Significant Incident / Restraint / Restriction Record
- Student Engagement Programme Referral
- Suspensions Notifications
- PEPs and Attendance for CiC

SAM Portal New User Form: log a call, IDT Self Service or email:

educationsystemsUPPORT@telford.gov.uk

Issue: Children not on the system

SAM Portal Online Forms – Quick Tips



Here are some quick tips for schools when using the [SAM Portal](#) to submit online forms, which should hopefully help to make the process smoother.

- Your username should be your email address, unless you have been told otherwise
- You should have been prompted to change your password the first time you signed in, so this should be something that you have created and will no longer be the stock password provided to you
- Please **do not** use the 'Create Account' or 'Forgot Password' options at these stages. Contact educationsystemsUPPORT@telford.gov.uk if you need any support with logging into your account
- When searching for a pupil's record, it is easier to searching using less information - i.e. Forename and Surname is sufficient. You can also use the % as a wildcard – e.g. A% in the forename box will search for any pupil whose first name starts with 'A'
- If a pupil is not showing up, return to the search screen and leave every box blank and then press search. You can scroll through the whole list of pupils and try to locate them this way. You can also use Ctrl + F at this point
- If a pupil does not show up after these steps, please email educationsystemsUPPORT@telford.gov.uk with the pupil's name, DOB, school and school start date, and this can be resolved for you

[The SAM Portal can be found here.](#)



Telford & Wrekin
Co-operative Council

Protect, care and invest
to create a better borough

SENCO Network meeting

Laura
SENCo Who's who!

Who's Who

SEND Team Leads

Who are we? and What do we offer?





+



o

•



SEND Team Leads

Who's Who

Sharonjit Sandhu.
SEND Team Lead.

Vicki Abbott.
PfA SEND Team Lead.

Gwen Nutting.
SEND Project Team Lead.



+

o

SEND Team Leads Who's Who

**Dr Jane Park. Co-Principal Ed
Psych (Lead EP Hadley Locality)**



**Dr Meryl Newton. Co-Principal Ed
Psych (Lead EP Wrekin Locality)**

•



SEND Team Leads
Who's Who

Angela Denton.
LSAT Team Lead



Kate Jordan.
Portage Team Lead

-



SEND Team Leads
Who's Who

Nikki Coombes.
HI Lead Teacher
Ruth Lawton.
HI Lead Teacher





SEND Team Leads
Who's Who

Gill Dorricott
VI Joint Lead Teacher



Linda Webb
VI Joint Lead Teacher

•



Telford & Wrekin
Co-operative Council

Protect, care and invest
to create a better borough

SENCO Network meeting

Angela Denton
LSAT Team Lead
ISF and Outreach updates

ISF Updates

Application deadline is 5pm the Tuesday before panel but can be submitted any time before this.

Paperwork submitted will be checked as it arrives and before a place on panel is allocated.

If there is sufficient time, you will be e-mailed and asked to supply anything that is missing before the application deadline.

If there is insufficient time, or you supply the missing details after the deadline then your application will be deferred to the next panel.

There is now one form for a new application for funding, Outreach or advice and one form for a review.

When making a new application, you must include:

- your provision maps as evidence of the APDR cycle.
- a costed provision map showing how you have spent the notional budget and what you intend to use the additional funding for.
- child and parental views.

The previous paperwork will no longer be accepted.

All new forms can be found on the Local Offer.

Things to remember:



Cost

Only cost for 38 weeks

Do not cost

Do not cost for Assistive Technology – this is classed as 'accessibility'. Schools need to fund up to £1000 per item.

Include

Please include the external agency reports rather than just referring to them in the application.

Make

Please make sure the forms are signed and the boxes in the parent section are ticked.

Outreach Update

We have added in two additional steps to our outreach process:

- Before outreach is delivered into your school, the SENCo will need to attend a training session which will focus upon general strategies. This will be face to face, over the space of a morning.
- You will then receive the outreach support in school, focusing upon the individual child or group.
- At a later date, you will receive a follow up visit that will focus upon provision and progress.



Telford & Wrekin
Co-operative Council

Protect, care and invest
to create a better borough

SENCO Network meeting

Laura
SENCo Networking

Activity

SENCO voice

HOT TOPICS WWW/ Next Steps

Useful/free resources - those you find useful- we will collate and publish a summary in Newsletter.

WTPP Parents asking about what they should expect for **interventions** their CYP offered.

What are your top 5 Interventions used in your setting?

How can we help you?

- What do you want to hear more about?
- Drop Ins



Telford & Wrekin
Co-operative Council

Protect, care and invest
to create a better borough

SENCO Network meeting

Dr Meryl Newton/ Dr Jane Park
Co-Principal Educational Psychologists
EP Service & Support 24/25

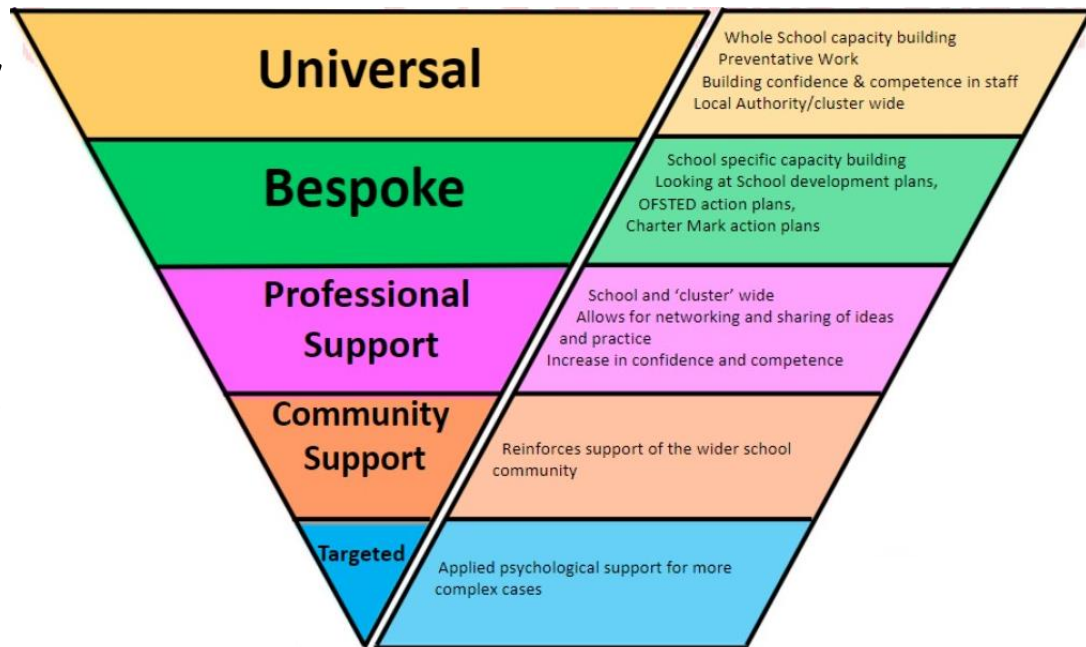
Educational Psychology Service



Introducing TAW EPS's service delivery model 24/25:

We are excited to announce the launch of our refreshed and enhanced Educational Psychology (EP) service delivery model, designed to optimally support the needs of our schools and the successful inclusion of CYP across Telford & Wrekin.

- Lead EP
- Locality EP teams
- Central point of contact
- Focus on whole school development



ELSA Community Network Events

TAW EPS look forward to welcoming all our ELSAs together on a half termly basis for our ELSA Community Network events, where ELSAs will have opportunities for professional development, collaborative problem solving and networking in smaller groups, led by the TAW EP team. The CPD focus for the first event will be **early identification, intervention and strategies to support EBSA.**

ELSA Community Network Events will be taking place at Telford Mercure Hotel and the dates for the ELSA Community Network Events are:

Tuesday 1st October 2024 - 1:00pm-3:00pm

Tuesday 19th November 2024 - 1:00pm-3:00pm

Tuesday 28th January 2025 - 1:00pm-3:00pm

Tuesday 11th March 2025 - 1:00pm-3:00pm

Tuesday 20th May 2025 - 1:00pm-3:00pm

Tuesday 24th June 2025 1:00pm-3:00pm

It is essential for ELSAs to receive regular ongoing support that develops knowledge and understanding from the viewpoint of safe practices, professional development and networking opportunities with other ELSAs. Therefore, for ELSAs to continue to practice, the expectation is attendance at **every** session and we ask for your support in releasing ELSAs to attend.

Shaping Futures Together



Telford & Wrekin
Co-operative Council

Protect, care and invest
to create a better borough

SENCO Network meeting

Sharonjit Sandhu and Vicki Abbott
SEND Team Leads

Phase Transition and Annual Review



Phase Transition



School Preference Submission

Deadline 31st October

**Nursery year - Year 2 pupils
(infant school only) & All Year 6
pupils**

Return Annual Reviews to SEND by **15 November 2024**

**Consultation sent to preference
and catchment schools**

29th November 2024 – This allows for statutory response time and three weeks before end of term

**EHCP Finalised with named
School**

15 February 2025 (Fri 14th February)

Year 11 - Timeline

Summer Term 2024	Between September 2024 & December 2024	
<p>Attend open days at appropriate Post 16 placements and apply directly to the setting</p>	<p>School's Careers Adviser arranges a full careers guidance interview and issues a Career Action Plan for all those with an EHC Plan.</p> <ul style="list-style-type: none"> • School/Placement SENCO arranges the Annual Review Meeting in order to complete the Annual Review form/make changes to the EHCP. • Young Person/Parent/Carer completes the Post 16 Preference Form and returns it to the current placement or to the SEND 0-25 team by: 20st December 2024 	
By 31 March 2025	By 17 March 2025	Between 20 January 2025 & 28 February 2025
<p>Final or amended EHC Plan will be issued to name the young person's allocated Post 16 Provision for September 2025.</p>	<p>An Amendment notice will be sent out, identifying any proposed amendments to the EHC Plan and the intended Post 16 setting to be named in Section 1 of the EHC Plan</p>	<p>SEND 0-25 Team will consult with placements about the young person's preferred options.</p>

Year 12+

- All EHCP's for Year 12+ must have a placement named by 31st March 2025 the same as Year 11.
- Where Year 12+ learners will be changing placement at the end of the academic year we will follow the Year 11 process.
- We will contact all settings before Christmas asking for learners who will be leaving to be identified.
- Where learners will be returning in September 2025 we will send a letter confirming this by 31st March 2025.



Annual Reviews – Top Tips

✓ Only update an EHCP if there is a significant change – don't feel that the EHCP must be changed at each review. *EHC plans are not expected to be amended on a very frequent basis CoP 9.193*

✓ Key year groups are Reception, Yr 2, Yr 5, Yr 10. If you get the plans accurate at these points it will help prepare the child for transition.

✓ Ensure that you have the most up to date 'word version' of the EHCP at the live review meeting.

✓ Gather information from Health, Social Care and Support Services before the annual review meeting

***Overdue Annual Reviews** – the Annual Review Coordinator will be contacting schools to arrange any Overdue Annual Reviews!

'What to consider'

- What is being requested? (Mainstream to special / Special to mainstream)
- Is the provision (Section F) appropriate
- Do we have all the information?
- Have the relevant people contributed



Telford & Wrekin
Co-operative Council

Protect, care and invest
to create a better borough

SENCO Network meeting

Natalie Bevan

Strategic Lead West Midlands SEND & AP Change Programme


SEND and AP Change Programme


Primary Heads Forum

26th September 2024

September Progress

 Completed

 Work in progress

 On Hold from the DfE or LA

Local Area
Inclusion Plans

SEND and AP data
Dashboard

EHCP
Standardisation

Strengthened
Approaches to
SEND Mediation

Advisory Tailored
Lists

Multi-Agency
Panels

Bands and Tariffs

Alternative Provision
Reform – 3-Tier Model
Investment £600k

Early Language Support
(ELSEC)
Investment 1 Million

Framework for
National Standards
Investment £300k

The ELSEC Team

- **Gillian Hackett** - SLT Project Lead
- **Joanne Preston** - Specialist Teacher
- **Nikki Stinton** - Advanced Practitioner, Speech and Language Therapist
- **Tracey Inniss** - Advanced Practitioner, Speech and Language Therapist
- ELSEC practitioners:

Rachel White
Kerry Nicholls
Donna Molloy
Sarah Bryan
Becky Fenn
Laura Taylor
Wendy Marsh



The ELSEC Schools

- William Reynolds Primary
- St Mary's Primary
- Meadows Primary
- St Lukes Primary
- Hollinswood Primary
- Lawley Village Academy
- Windmill Primary
- Lawley Primary

Explore different ways of promoting SLC in the Early Years and K S 1

Build on what settings are already doing to promote SLC

Provide **additional interventions** for children with SLC needs (SLCN)

Focus on **co-production** - joined up working between **health and education and parents**

Improve **early identification** and support for CYP with SLCN

Reduce need for specialist referrals

Increase workforce capacity

Compliment existing Speech and Language Therapy support already provided within the setting

Alternative Provision

**Tier 1 – Targeted
Support for KS4
outreach**

**Tier 2 – Time limited
placements:
Developing KS4
intervention**

**Alternative Provision
Specialist Taskforce
To be determined**

**Alternative Provision
Commissioner in
place**

**Recruitment for APST
to be joint with
Shropshire C**

**Increase workforce
capacity**

Compliment existing
AP settings with the
outreach support

Ordinarily Available Provision (Inclusive Provision)

Strong planning and development focus for the months ahead.

Actions to include:

- Survey to schools and settings to identifying enablers and barriers to inclusive practice
- To map out best practice in Telford
- To develop a role to support across SEND and School Improvement
- To develop a subgroup aligned with the SEND and AP Strategy “Inclusive Mainstream Practice”
- To revise the current Provision Matrix with schools to reflect the needs in our area including health
- To complete the Skills and Progression tool for Early Years and create a Primary tool to support schools and settings.

Activity

We need to hear from you.....

- **Green** – What are the enablers to good Inclusive Practice?
- **Orange** – What are the barriers to good Inclusive Practice?
- **Yellow** – What Inclusive Practice are you proud of?
Don't forget to tell us what school you are!

Next meetings:

Annual Review Workshop

17th October 2024 4-5pm via Teams

SENCo Network Meetings (face to face)

16th January 2025 4pm-5.30pm

20th March 2025 4pm-5.30pm

APDR Workshop (Teams)

Thursday 6th March 2025 4–5pm via Teams





Telford & Wrekin
Co-operative Council

Protect, care and invest
to create a better borough

Thank you for listening.

See you at the
Annual Review Workshop
17th October 2024 4-5pm via Teams